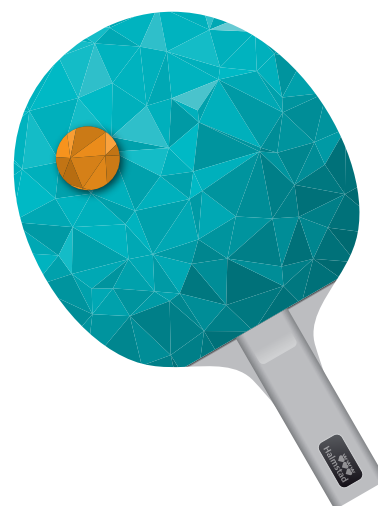




# EUROPEAN TABLE TENNIS OLYMPIC QUALIFICATION

HALMSTAD • SWEDEN • 12-16 APRIL 2016

European Table Tennis Qualification Tournament  
Qualification Event for the Games of the  
XXXI Olympiad in Rio de Janeiro in 2016



Halmstad.



STIGA®



Halmstad.



ITTF

EUROPEAN TABLE TENNIS  
OLYMPIC QUALIFICATION  
HALMSTAD - SWEDEN - 12-16 APRIL 2016



## Dear friends and supporters of European Table Tennis

It is with the greatest sympathy for the Turkish Table Tennis Association and the organizers in Istanbul, that we have assumed the responsibilities to organize the European Olympic singles qualification in Halmstad, Sweden 12-16 April. Rest assure that we will work around the clock in order to secure the best possible playing conditions and quality management for one of the most important events on the 2016 European calendar .

At this moment, allow us to wish all our European friends welcome to Sweden and the city of Halmstad, host of the 2018 World Team Table Tennis Championships. We are proud of the confidence placed in our abilities by the international governing bodies: ETTU and the ITTF. Please find with this email the official prospectus of the event.

Please pay attention to the following very relevant information concerning the event.

Playing Venue ; Halmstad Arena [www.halmstadarena.se](http://www.halmstadarena.se). Main venue will open for training Monday 11 th April at 10.00 am. Training hall (12 tables) will be available from Sunday 10 th April 09.00.

**Tables:** Stiga Expert VM

**Ball:** Nittaku Premium 40+ \*\*\* (white)

**Flooring:** Taraflex RED

**Official airport for pick up:** Gothenburg Landvetter International Airport (GOT) and Halmstad City Airport (HAD).

For all delegations arriving into Copenhagen Airport (no official pick up) – please take the high speed train towards Gothenburg to reach Halmstad (1 h, 50 minutes) Pick up shuttles will service the Halmstad Train Station.

**Travel details – Final confirmation:** Monday 4 th April

On behalf of the Swedish Table Tennis Association and the local organizers,

Welcome to Halmstad, Sweden

**Bengt Andersson**

Tournament Director

Swedish Table Tennis Association

**Johnny Ewerstein**

Project Manager,

Destination Halmstad



Halmstad.



TIGG

EUROPEAN TABLE TENNIS  
OLYMPIC QUALIFICATION  
HALMSTAD - SWEDEN - 12-16 APRIL 2016



- Date** **Tuesday 12 th to Saturday 16 th April 2016**
- Authority** The Qualification Event for the Games of the XXXI Olympiad in Rio de Janeiro in 2016 will be organised by the Swedish Table Tennis Association, under the authority granted by the International Table Tennis Federation (ITTF) and the European Table Tennis Union (ETTU).
- Host Association** **Swedish Table Tennis Association**  
Köping Arena, 731 85 Köping, Sweden  
Phone: +46856278120  
Event Email: eogq.halmstad@gmail.com  
Email: info@svenskbordtennis.com
- Playing Venue** **Halmstad Arena**  
Växjövägen 11, 302 44 Halmstad  
Phone: +4635152755  
info@halmstadarena.se
- Eligibility** Open to the players of the European National Olympic Committees (NOC) which must enter the players through the respective ETTU member Associations. All players entered shall be eligible to represent their NOC in the Olympic Games according to the relating International Olympic Committee (IOC) and ITTF regulations.
- Rules, Regulations** The tournament shall be played in accordance with the Laws of Table Tennis, the ITTF Regulations for International Competitions, and the ETTU Regulations part G.
- Events** Men's Singles and Women's Singles. All matches shall be the best of 7 games.
- Entry** Each National Olympic Committee (NOC) may enter up to 6 players (maximum 3 men and 3 women) except that the NOC whose player won the European Games singles event may only send 2 men (GER) or 2 women (NED). Maximum 2 players from an NOC can qualify for the Rio 2016 Olympic Games singles events.
- Playing System** 10 men and 10 women will qualify for the Rio 2016 Olympic Games singles events. If including 2015 European Games qualifiers there are more than 2 players qualifying from the same National Olympic Committee (NOC) per gender, a mechanism has been established to determine 2 qualifiers, the third player being a reserve. This is explained through the "Annex 1". The winners of the European Games singles event in Baku, Azerbaijan, 13th-19th June 2015, are direct qualified for the Rio 2016 Olympic Games singles events.
- Days 1 and 2: Preliminary Stage number of participants up to 64 players**  
If up to 64 participants, the tournament will be held in 3 days. ETTU will notify immediately the entered Associations so they can arrange accordingly their travel.  
number of participants 65-79 players  
3-4 players in 16 groups A-P are playing in round robin. There will be 16 seeded players.  
The 16 seeded players will not play in the groups, but are direct qualified for Stage 1.



Halmstad.



TIGG

EUROPEAN TABLE TENNIS  
OLYMPIC QUALIFICATION  
HALMSTAD · SWEDEN · 12-16 APRIL 2016



The remaining players will be drawn into the 16 groups A-P 4 by 4 to positions 1-3 or 1-4 according to the snake system. Players from same NOC will be drawn into different groups. The top 3 players in each of the 16 groups A-P will qualify for Stage 1 together with the 16 seeded players, a total of 64 players.

number of participants 80-112 players 4-6 players in 16 groups A-P are playing in round robin. There will be 16 seeded players. The 16 seeded players will not play in the groups, but are direct qualified for Stage 1. The remaining players will be drawn into the 16 groups A-P 4 by 4 to positions 1-4, 1-5 or 1-6 according to the snake system. Players from same NOC will be drawn into different groups. The top 3 players in each of the 16 groups A-P will qualify for Stage 1 together with the 16 seeded players, a total of 64 players.

#### **number of participants 113-128 players**

5-6 players in 16 groups A-P are playing in round robin. There will be 32 seeded players. The 32 seeded players will not play in the groups, but are direct qualified for Stage 1. The remaining players will be drawn into the 16 groups A-P 4 by 4 to positions 1-5 or 1-6 according to the snake system. Players from same NOC will be drawn into different groups. The top 2 players in the 16 groups will qualify for Stage 1 together with the 32 seeded players, a total of 64 players.

#### **number of participants 129-149 players**

4-6 players in 20 groups A-T are playing in round robin. There will be 32 seeded players. The 32 seeded players will not play in the groups, but are direct qualified for Stage 1. The remaining players will be drawn into the 20 groups A-T 4 by 4 to positions 1-4, 1-5 or 1-6 according to the snake system. Players from same NOC will be drawn into different groups. The 20 winners in the 20 groups A-T and 12 of the 20 runner-ups will qualify for Stage 1 together with the 32 seeded players, a total of 64 players. The 20 runner-up will be drawn in to 12 qualification matches. Winners of the matches (or those having a bye) will qualify for Stage 1. Players from same NOC will be separated.

#### **Day 3: Stage 1 (up to 64 players)**

Up to 8 players in each of 8 groups a-h in positions 1-8 are playing in direct K.O. system. The 8 players seeded No 1-8, go respectively to position 1 in groups a-h. The 8 players seeded 9-16 are drawn in position 8 in groups a-h. The 16 players ranked 17-32 are drawn to position 4 or 5 in groups a-h. The 32 players ranked 33-64 are drawn to positions 2, 3, 6 & 7 in groups a-h. Players from same NOC will be drawn into different groups. The winners of each of the 8 groups are qualified for the Rio 2016 Olympic Games if – including 2015 European Games qualifiers – there are no more than 2 players qualifying from the same NOC. Otherwise, a mechanism has been established to determine 2 qualifiers, the third player being a reserve). This is explained through the “Annex 1”.

#### **Day 3: Stage 1 (65-112 players)**

8 players in each of 8 groups a-h in positions 1-8 are playing in direct K.O. system. The 8 players seeded No 1-8, go respectively to position 1 in groups a-h. The 8 players seeded 9-16 are drawn in position 8 in groups a-h. The 16 winners of groups A-P are drawn in to positions 4 and 5 in groups a-h. The 16 runner-up of groups A-P are drawn to position 3 and 6 in groups a-h. The 16 players finishing in third position in groups A-P are drawn to positions 2 and 7 in groups a-h. Players from same NOC will be drawn into different groups. Players who met in the Preliminary stage will not play each other in Stage 1. The winners of each of the 8 groups are qualified for the Rio 2016 Olympic Games if –including 2015



Halmstad.



TIGG

EUROPEAN TABLE TENNIS  
OLYMPIC QUALIFICATION  
HALMSTAD · SWEDEN · 12-16 APRIL 2016



European Games qualifiers – there are no more than 2 players qualifying from the same NOC. Otherwise, a mechanism has been established to determine 2 qualifiers, the third player being a reserve). This is explained through the “Annex 1”.

### **Day 3: Stage 1 (113-128 players)**

8 players in each of 8 groups a-h in positions 1-8 are playing in direct K.O. system. The 8 players seeded No 1-8, go respectively to position 1 in groups a-h. The 8 players seeded 9-16 are drawn in position 8 in groups a-h. The 16 players ranked 17-32 are drawn to position 4 or 5 in groups a-h. The 16 winners of the groups 1-16 in the qualification stage are drawn to position 3 or 6 in groups a-h. The 16 runners-up of the groups 1-16 in the qualification stage are drawn to positions 2 or 7 in groups a-h. Players from same NOC will be drawn into different groups. Players who met in the Preliminary stage will not play each other in Stage 1. The winners of each of the 8 groups are qualified for the Rio 2016 Olympic Games if – including 2015 European Games qualifiers – there are no more than 2 players qualifying from the same NOC. Otherwise, a mechanism has been established to determine 2 qualifiers, the third player being a reserve). This is explained through the “Annex 1”.

### **Day 3: Stage 1 (129-149 players)**

8 players in each of 8 groups a-h in positions 1-8 are playing in direct K.O. system. The 8 players seeded No 1-8, go respectively to position 1 in groups a-h. The 8 players seeded 9-16 are drawn in position 8 in groups a-h. The 16 players ranked 17-32 are drawn to position 4 or 5 in groups a-h. The 16 winners of the groups 1-16 in the qualification stage are drawn to position 3 or 6 in groups a-h. The 4 winners of groups 17-20 and the runners-up winning the qualification match are drawn to position 2 or 7 in groups a-h. Players from same NOC will be drawn into different groups. Players who met in the Preliminary stage will not play each other in Stage 1. The winners of each of the 8 groups are qualified for the Rio 2016 Olympic Games if –including 2015 European Games qualifiers – there are no more than 2 players qualifying from the same NOC. Otherwise, a mechanism has been established to determine 2 qualifiers, the third player being a reserve). This is explained through the “Annex 1”.

### **Days 4 and 5: Stage 2**

The remaining 56 players from Stage 1 (the 8 group winners are already qualified for the Rio 2016 Olympic Games) will continue in Stage 2 in two direct K.O. draws of 32 players with 4 byes each. To make it easier to understand, both 32 places draws are numbered consecutively. Thus, draw RED has places 1-32 and draw BLUE has places 33-64. The 8 losing finalists in the 8 groups in Stage 1 will be drawn to positions 1, 16, 17, 32, 33, 48, 49 and 64. The 16 losing semi-finalists in the 8 groups in Stage 1 will be drawn in to positions 5, 8, 9, 12, 21, 24, 25, 28, 37, 40, 41, 44, 53, 56, 57 and 60. The 32 losing quarter-finalists in the 8 groups in Stage 1 will be drawn to positions 3, 4, 6, 7, 10, 11, 13, 14, 19, 20, 22, 23, 26, 27, 29, 30, 35, 36, 38, 39, 42, 43, 45, 46, 51, 52, 54, 55, 58, 59, 61 and 62. Players from the same NOC will be separated as far as possible. Players who met in Stage 1 or in Stage 2 will be separated as far as possible. The winners of draw RED and draw BLUE are qualified for the Rio 2016 Olympic Games if –including 2015 European Games qualifiers – there are no more than 2 players qualifying from the same NOC. Otherwise, a mechanism has been established to determine 2 qualifiers, the third player being a reserve). This is explained through the “Annex 1”.



Halmstad.



ITTF

EUROPEAN TABLE TENNIS  
OLYMPIC QUALIFICATION  
HALMSTAD - SWEDEN - 12-16 APRIL 2016



### Day 5: Reserve list

The losers of the finals in Stage 2 are playing for position 1 and 2 on the reserve list for the Rio 2016 Olympic Games. The losers of the semi-finals in Stage 2 are playing for positions 3, 4, 5 and 6 on the reserve list for the Rio 2016 Olympic Games. The next 8 players on the reserve list, 7 – 14, will be the losers of quarter-finals in Stage 2 sorted according to the ETTU ranking at the time of the draw on 5th April 2016.

### Order of Play

Taking into account that in each group 2 or 3 players either move forward direct to Stage 1, or move forward to qualify for Stage 1 by K.O., the order of play will be as follows:

Group of 3: 1-3: 1-2: 2-3

Group of 4 (2 qualifiers for Stage 1): 1-3, 2-4: 1-2, 3-4: 1-4, 2-3

Group of 4 (3 qualifiers for Stage 1): 1-3, 2-4: 1-4, 2-3: 1-2, 3-4

Group of 5 (2 qualifiers for Stage 1): 1-4, 2-5: 2-4, 3-5: 1-3, 4-5: 1-2, 3-4: 1-5, 2-3

Group of 5 (3 qualifiers for Stage 1): 1-4, 2-5: 2-4, 3-5: 1-3, 4-5, 1-5, 2-3: 1-2, 3-4

Group of 6 (2 qualifiers for Stage 1): 1-4, 2-5, 3-6: 1-6, 2-4, 3-5:

1-3, 2-6, 4-5: 1-2, 3-4, 5-6: 1-5, 2-3, 4-6

Group of 6 (3 qualifiers for Stage 1): 1-4, 2-5, 3-6: 1-6, 2-4, 3-5: 1-3, 2-6, 4-5: 1-5, 2-3,

4-6: 1-2, 3-4, 5-6

### Travel Details

No later than Monday April 4 th. Please send back the attached travel confirmation form by e-mail to: **Karl Jindrak**, Competition Manager: [kjindrak@ittfmail.com](mailto:kjindrak@ittfmail.com),

**Pierre Kass**, ETTU office: [ettu@pt.lu](mailto:ettu@pt.lu)

Swedish Table Tennis Association: [eogq.halmstad@gmail.com](mailto:eogq.halmstad@gmail.com)

### Substitutions

The Competition Manager, ETTU office and host Association must be advised of any changes/substitutions no later than Thursday April 7 th 2016, after this deadline no substitution or change of player is allowed.

### Default

The ITTF Ranking Default Policy applies for the entire tournament, with special rules valid for the Olympic Games Qualification Tournaments.

### Draw

The Preliminary Stage draw will be conducted on Monday 11th April 2016 commencing at 1400 local time CEST (14.00). The Stage 1 and Stage 2 draws will be conducted as soon as possible after the completion of the previous stage.

### Levy

There shall be a levy of EUR 100 per participating player payable to ETTU (Regulation G6.2).

### Press Officer

**Max Ansbro**

E-mail: [max.ansbro@svenskbordtennis.com](mailto:max.ansbro@svenskbordtennis.com)

Phone: +46767770477

### Project Manager

**Johnny Ewerstein**, Destination Halmstad

E-mail: [johnny.ewerstein@halmstad.se](mailto:johnny.ewerstein@halmstad.se)

Phone: +46702340241

### Tournament Director Bengt Andersson

E-mail: [bengt.andersson@svenskbordtennis.com](mailto:bengt.andersson@svenskbordtennis.com)

Phone: + 46856278127, mobile: +46708212468



Halmstad.



EUROPEAN TABLE TENNIS  
OLYMPIC QUALIFICATION  
HALMSTAD • SWEDEN • 12-16 APRIL 2016



## Logistics /Travel

### Malin Karlsson

Email: eogq.halmstad@gmail.com  
Tel: +46768709481

## Competition Manager

### Karl Jindrak

E-mail: kjindrak@ittfmail.com  
Phone: +43 699 124 17 193

## Referee

**Steen Andersen** (DEN)

## Deputy Referees

**Maria Tsiou** (GRE), **Gerhard Schnabel** (GER)

## Equipment

Tables: STIGA VM EXPERT (blue)  
Nets: STIGA VM

## Balls:

Nittaku Premium 40+ \*\*\* (white)

## Sports floor:

TARAFLEX (red)

## Doctor

There will be an official doctor for the tournament.

## Medical Service

Medical Services (doctor and physiotherapist) will be provided in the venue from Monday afternoon until Saturday evening.

## Official Hotels

### BEST WESTERN PLUS Grand Hotel

Adress: Stationsgatan 44, 302 45 Halmstad  
Phone: +46352808100  
[www.grandhotel.nu](http://www.grandhotel.nu)

### Clarion Collection Hotel Norre Park

Adress: Norra Vägen 7, 302 31 Halmstad  
Phone: +4635218555

### Sweden Hotel Continental

Adress: Kungsgatan 5, 302 45 Halmstad  
Phone: +4635176300  
<http://www.continental-halmstad.se/sv-SE/Hem.aspx>

### First Hotel Mårtenson

Adress: Storgatan 52, 302 43 Halmstad  
Phone: +4635177575

### Good Morning Halmstad

Adress: 302 60 Halmstad, Prästvägen 1, 302 63 Halmstad  
Phone: +4635183500



Halmstad.



EUROPEAN TABLE TENNIS  
OLYMPIC QUALIFICATION  
HALMSTAD · SWEDEN · 12-16 APRIL 2016



## Hospitality

- **225 EURO per person in single occupancy.**
- **185 EURO per person in double occupancy.**

Breakfast at the hotel, lunch and dinner at the venue, and airport/hotel transfer are included. Information for room bookings regarding number of persons, single/double rooms and arrival/departure date should be provided by Monday 4th April 2016 to Malin Karlsson email: eogq.halmstad@gmail.com by using the Accommodation/Travel form.

## Travel

All participants should submit their arrival/departure details by Monday 4th April 2016 to Malin Karlsson (eogq.halmstad@gmail.com) and to Karl Jindrak (kjindrak@ittfmail.com).

## Payment

Please pay by bank transfer or upon arrival by cash to:

**Account holder:** Svenska Bordtennisförbundet

**Name of bank:** Sparbanken Västra Mälardalen

**Postal Address of bank:** Sparbanken Västra Mälardalen AB, Box 904, 731 29 KÖPING

**IBAN number:** SE64 8000 0818 2801 3138 7524

**SWIFT-BIC number:** SWEDSESS

**Bank account Number:** 8182 8 13 138 752-4

## Official Airports

**Gothenburg Landvetter International Airport (GOT) and Halmstad City Airport (HAD).**

For delegations arriving into the Copenhagen Airport (no official pick up!) - please take the high speed train towards Gothenburg to reach Halmstad (1 h, 50 minutes)

Pick up shuttles will service the Halmstad Train Station.

## Visa

Associations requiring an individual invitation letter for their delegation members to obtain the necessary visa shall inform Bengt Andersson: bengt.andersson@svenskbordtennis.com as soon as possible and provide full name, nationality, passport number and expiry date, date and place of birth.

## Information for players

By entering the event, players agree to abide by all ITTF rules and by the rules and regulations of the Organising Committee. All entered Associations and individual players agree to be under the auspices of the ITTF and its agents in all matters concerning television coverage, video, internet web casting, motion picture coverage, and photographic coverage of any kind. Participants release all rights, or rights held by their agents or sponsors, in all matters relating to television and web casting coverage, video and motion picture coverage, and photographic coverage of any kind. A participant's refusal of above listed coverage may be subject to suspension or dismissal from the competition.

## Information for participants

In the context of betting participants shall not, by any manner whatsoever, infringe the principle of fair play, show unsporting conduct, or attempt to influence the course or result





Halmstad.



TIGA

EUROPEAN TABLE TENNIS  
OLYMPIC QUALIFICATION  
HALMSTAD · SWEDEN · 12-16 APRIL 2016



of a competition, or any part thereof, in a manner contrary to sporting ethics. Any violation of this principle shall be disciplined according to provisions of ITTF regulation 3.5.3.

**Insurance**

By entering the event, each Association must ensure that all delegation members have medical, travel and other appropriate insurance.

**Deadlines**

<b>Accommodation Form</b>	<b>Monday 4 th April</b>
<b>Travel arrivals/departures</b>	<b>Monday 4 th April</b>
<b>Changes/Substitutions</b>	<b>Thursday 7 th April</b>

